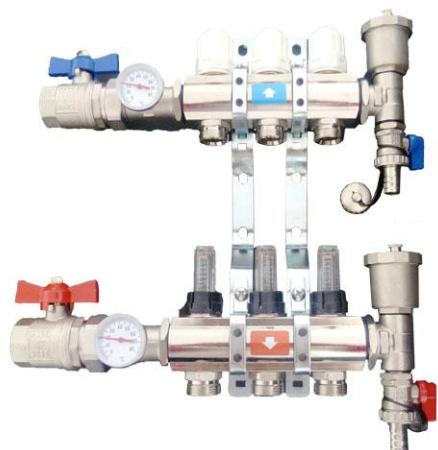


TB9001(EN) V6 2011-11-10

## 9001 – MANIFOLD FOR RADIANT FLOOR AND RADIATORS DISTRIBUTION

### Function:

Our pre-assembled manifold series 9001 has been designed to allow an easy and quick installation and to obtain an optimal distribution of the fluid in floor heating system circuits.



### Specifications:

Nickel-plated manifold with:

- 1 flow manifold complete with flow meters and built-in flow rate regulating valves (from 0 to 5 l/min).
- 1 return manifold with built-in shut-off valves suitable for electro-thermal actuators.
- 2 ball shut-off valves (female connexion 1") with blue and red handles.
- 2 union fittings, with swivel nuts, with thermometers.
- 2 automatic air vents.
- 2 ball fill/drain valves with blue and red handles.
- Galvanized isophonic brackets for use with boxes 9005.
- Way-out 3/4" M euroconus.
- From 2 to 10 circuits.

The entry of the pipes can be changed easily to the left or right side.

### ACCESSORIES

#### **9002-01** – Electro-thermal actuator

- Thermostatic wax element.
- Protective self-extinguishing polycarbonate shell.
- CE mark, normally closed (NC), power supply: 230V or 24V.
- It's threaded directly (M30x1,5) on the return manifold of our 9001 series.
- Possibility of verifying the state closed/open by some windows of the shell.
- Length of supply cable: 90cm.
- Power consumption: 2,5W.
- Protection class: IP40.



#### **9003** – Euroconus 3/4 connector for plastic pipes

- Euroconus 3/4" connector for plastic pipes 16 x 1,5.
- Euroconus 3/4" connector for plastic pipes 16 x 1,8.
- Euroconus 3/4" connector for plastic pipes 18 x 2,0.
- Euroconus 3/4" connector for plastic pipes 20 x 1,9.



**9005 – Box for manifolds**

- Made of painted steel sheet with anti-corrosion protection.
- Adjustable depth (140-170mm).
- Closure with a push-fit clamp.



**THERMOSTATS**

**9006-01 – Wireless digital room thermostat**

- Weekly programmable chrono-thermostat with display.
- Communication by radio transmitter (RT) available to 30m.
- Power supply: 220V. 2A.
- CE mark.



**9006-02 – Digital room thermostat**

- Weekly programmable chrono-thermostat with display.
- Power supply: 220V. 2A.
- CE mark.



**9006-03 – Electronic thermostat**

- Power supply: 220V. 2A.
- CE mark.

