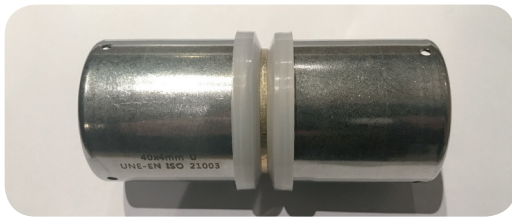


## AC-FIX PRESS-MULTI

### Assembly instructions DN 40, 50 and 63

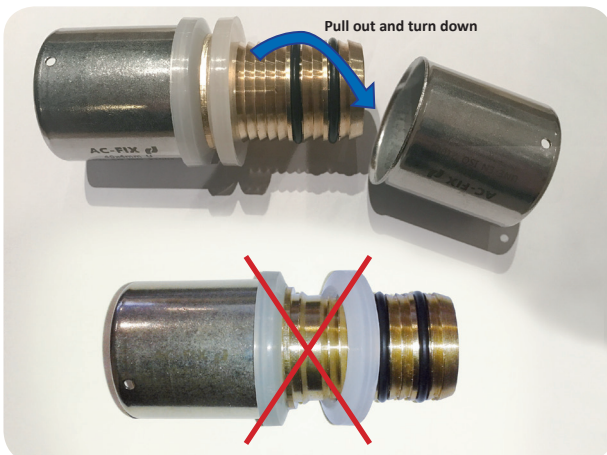
**This assembly process ensures:**

- That the sleeve is mounted in the correct direction, with the check holes at the end of the pipe. It is only possible in this way.
- That it can be visually checked that the O-Rings are not damaged in the assembly.



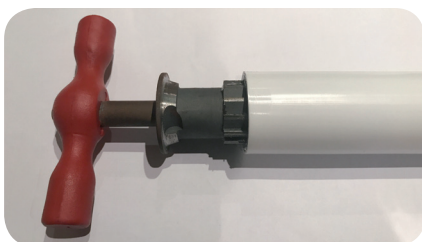
1

When you unpack the bag, you will see the position of the fitting is like the picture. Check holes are on the outer end of the stainless steel sleeve.



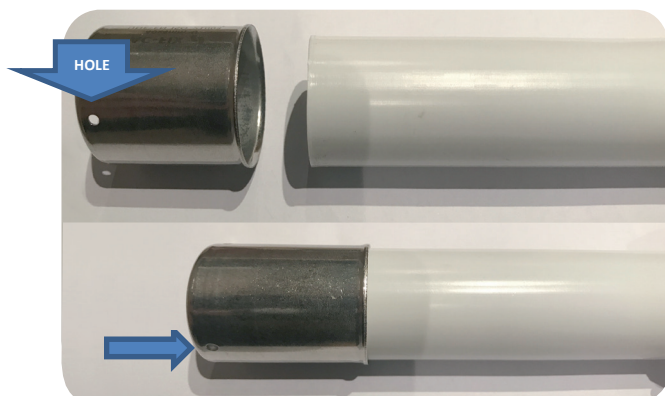
2

When you use the fitting, first pull out and turn down the sleeves like the picture, making sure that when pulling the sleeve, the plastic ring does not detach from the body of the fitting.



3

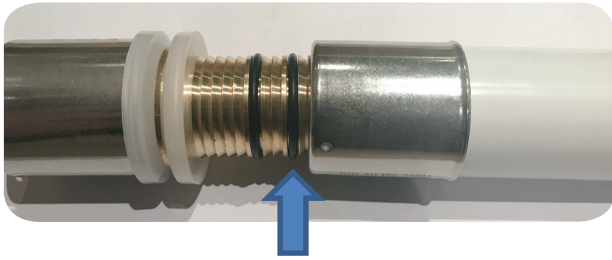
The pipe must be well cut, perpendicularly to its axis. Then, use the reamer to chamfer the pipe.



4

Put the sleeve on the pipe and make sure the check hole is at the end of pipe.

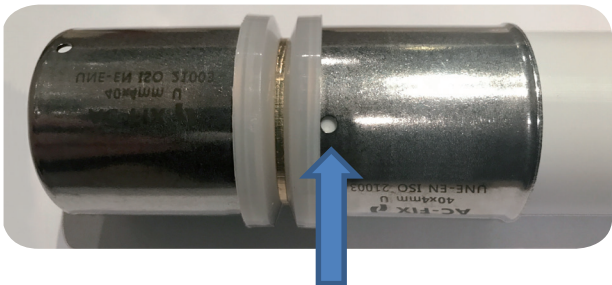
Please make sure the pipe is inserted to the end of the sleeve so you can see the pipe through the check holes.



5

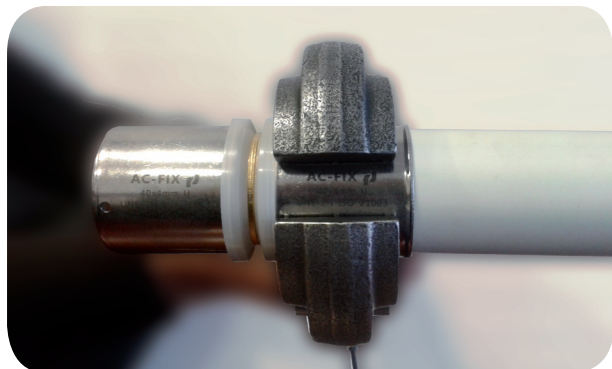
Then, insert the fitting body into the pipe with sleeve. Insert it carefully and check visually that the O-Rings are not damaged.

In order to facilitate the insertion of the fitting body into the pipe, it's advised to lubricate slightly the O-rings. For this, an appropriate lubricant liquid must be used, suitable for O-Rings and that it doesn't damage them. It's ideal to use a silicone fluid as, for example, XIAMETER® PMX-200 of DOW CORNING ©. If it's a potable water installation, a food grade must be used as, for example, XIAMETER® PMX-200 350CS food grade.



6

Make sure you can see the pipe through the check holes and make sure it is inserted to the end of the fitting body.



7

Press with U type jaws or rings. Place the side of the jaw beside the plastic ring and press. The plastic ring should not be pressed.