

Heating thermostat with 24-event everyday which has manual mode and program mode. Thermostat is recommended for the control of electric heating device or on/off valve actuator in hydronic underfloor heating.

Selection Table:

Model	Current	Application
9006-11	3A	Built-in&floor sensor, floor limit sensor
9006-11(23)	3A	Built-in&floor sensor,floor limit sensor,a potential-free output
9006-11(16)	16A	Built-in&floor sensor, floor limit sensor

Parameter:

Voltage: 220V/230V

Power: 2W

Setting range: 5~45°C (can adjust to 5-90°C)

External limitation : 5~60°C (factory setting 35°C)

Sensor: NTC internal/external sensor

Switch differential : 0.5-10°C adjustable factory setting±1°C




Ambient temperature : -5~50°C

Protective housing: IP20



Housing material: Anti-flammable PC

User operation:




1) ON/OFF and mode select:

Slide power switch to  is program mode, to  is manual mode,
to  is power off.

2) Temperature value setting

Press  key to increase temperature, press  key to decrease temperature,
one time pressing is 0.5°C.

Advanced setting: (qualified person preferred)

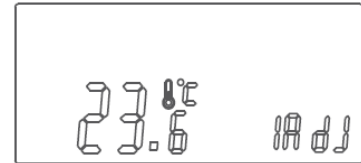
Usually finished at mounting thermostat. Press  key in power off state at the same time switch on and turn to program mode, using menu key to turn page, pressing  and  keys to modify technical data.

➔ 1 ADJ room temperature display and calibration:

Press \odot or \ominus key to adjust the present temperature value.

Range: $\pm 9.9^{\circ}\text{C}$

Press menu key to enter next step.



➔ 2 SEN Sensor mode:

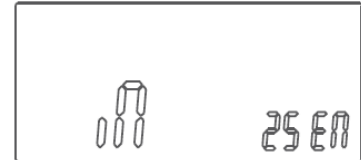
Press \odot or \ominus key to choose sensor.

IN: built-in sensor

OUT: floor sensor

ALL: both sensor

Press menu key to enter next step.

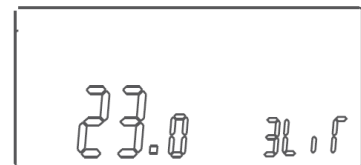


➔ 3 LIF Limitation value modification:

Press \odot or \ominus key to modify the temp. limited value.

Limitation range: $5\text{-}60^{\circ}\text{C}$

Press menu key to enter next step.

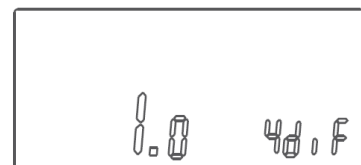


➔ 4 DIF Switch differential setting:

Press \odot or \ominus key to adjust the switch differential

Setting range : $0.5\text{-}10^{\circ}\text{C}$

Press menu key to enter next step

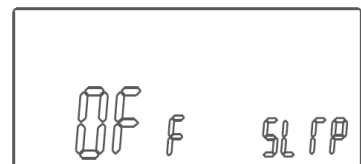


➔ 5 LTP Start anti-frozen function in power off:

Press \odot or \ominus key to change the current anti-frozen function.

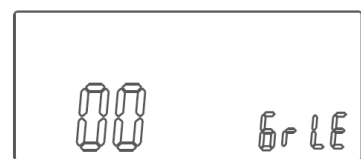
$5\text{-}90^{\circ}\text{C}$ or OFF

Press menu key to enter next step.



➔ 6 RLE Potential-free output and main power output in same/different way.

Press \odot or \ominus key to change the current link state and relay output state.



When actuator opening,

00 means main power output is 01, potential-free output also is 01

01 means main power output is 01, but potential-free output is 10

02 means main power output is 10, potential-free output also is 10

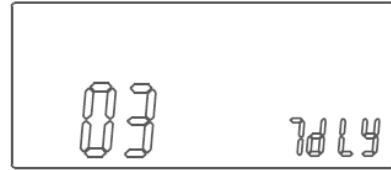
When actuator closed,

00 means main power output is 10, potential-free output also is 10

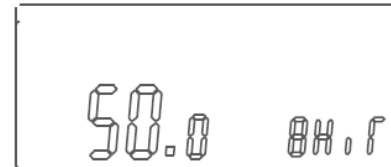
01 means main power output is 10, but potential-free output is 01

02 means main power output is 01, potential-free output also is 01

- ➔ 7 DLY Delay time of potential-free output:
Press \odot or \ominus key to change linkage delay time.
Range: 0-5Min
Press menu key to enter next step.



- ➔ 8 HIT Setting temperature UP limited value
Press \odot or \ominus key to change the UP limitation
Range: 35-95°C Min
Press menu key to enter next step.



- ➔ 9 AFAC Reset to factory setting
Press \odot key for 5sec. till showing - - -
Reset to factory setting
Press menu key to go back to the first step of advanced setting.






Attention:

It is necessary to power off after finishing the advanced setting; all modifications will operate after re-opening the thermostat.

Sensor Failure

Please choose the correct sensor mode, otherwise there will be problem, the LCD will show ER0 or ER1. ER0: built-in sensor short-circuited or disconnected. ER1: floor sensor short-circuited or disconnected. Thermostat can't work till the error is eliminated.

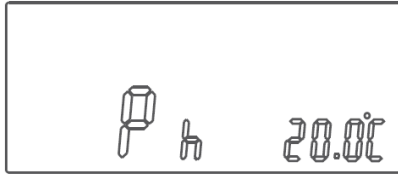
Three control modes

-  Manual control: According to current manual setting, room temperature controls individual without relative to program mode.
-  Program mode: It has 24-event everyday, each event can be set as energy saving temperature or comfort temperature. That can be set event and temperature personally according to the personal live habit. 7 days cycle for event program. Under the event program mode, press \odot or \ominus key can modify the temperature value that temporary control.
-  Anti-frozen protection control: set temperature is 5°C to make sure the room temperature is not less than 5°C, to avoid the water is frozen (only for water heating).

Electric cable/film heating without this function, please close it in advanced setting. In factory setting this function is closed, if you want to start, please enter the advanced setting to modify it.

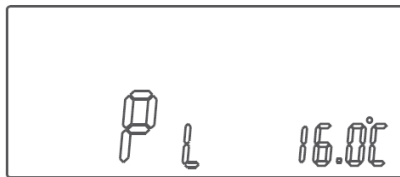
The setting method of high temperature and low temperature, checking the program set

In work state, press menu key shortly to enter high/low temperature setting. LCD display as below :



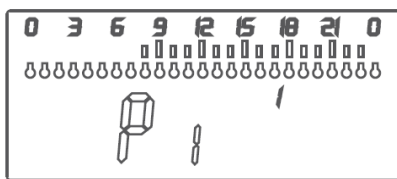
Press \odot or \ominus key to adjust the “high temperature”
Factory setting is 20°C

Press menu key shortly again to enter the energy saving temperature value, setting LCD as below:



Press \odot or \ominus key to adjust the “low temperature”
Factory setting is 16°C

Press menu key shortly again to enter the program checking LCD as below:



Press \odot or \ominus key to check day program setting.

Under working state, press menu key 5 seconds to enter the program event (there are 6 preset programs – P1 to P6-) Press menu key to choose the P1 to P6 and press \odot button and \ominus button to choose the day of the week.

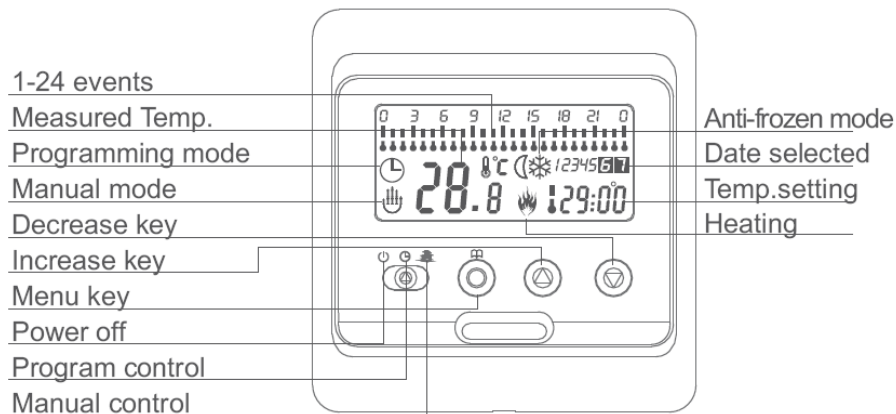
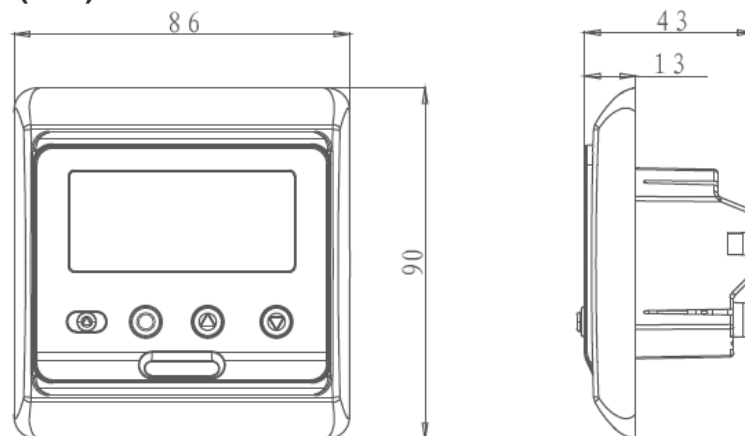
NO.	Work day programme	Rest day programme
P1		Rest day same as work day
P2		
P3		
P4		
P5		
P6		Rest day same as work day

P1/P2/P3 prefer to residential house, P4/P5 for office, P5 works for 24 hours in energy saving operation.

Self setting program:

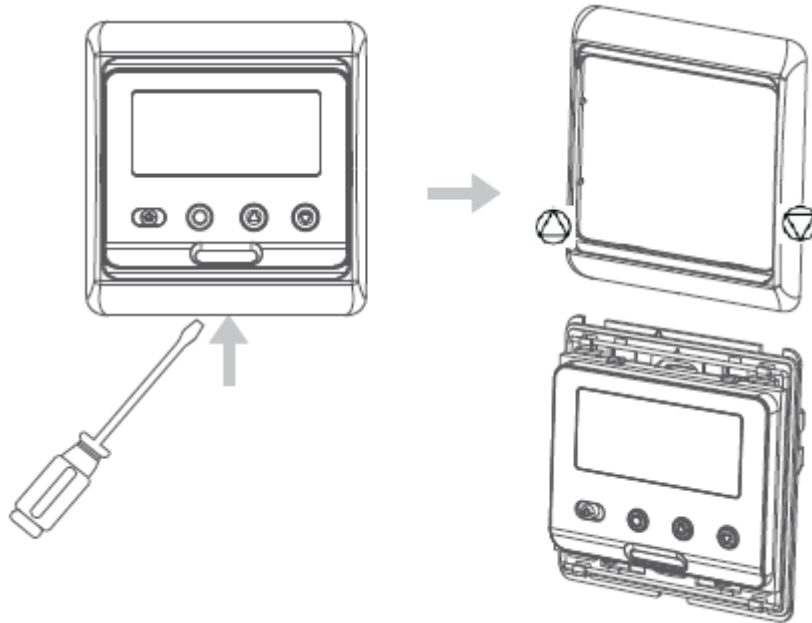
If the pre-setting program couldn't satisfy the requirement of user, P7 is left for modification by user.

- 1) Under thermostat working state, press menu button 5 seconds to enter the event program, then press menu button shortly to choose P7.
- 2) Press Menu button 5 seconds to enter self setting program screen when in P7 step.
- 3) Slide the button from ☰ to ☷ for changing anti-frozen mode and program mode.
- 4) Press menu button to choose the date 1 ...date 7.
- 5) Press ⬆ button one time, corresponding high temperature, press ⬆ button again to make sure enter next program event.
- 6) Press ⬇ button one time, corresponding low temperature, press ⬇ button again to make sure enter the next program event.
- 7) Press menu button again to enter program event setting, recycle like that to finish the program of whole week.

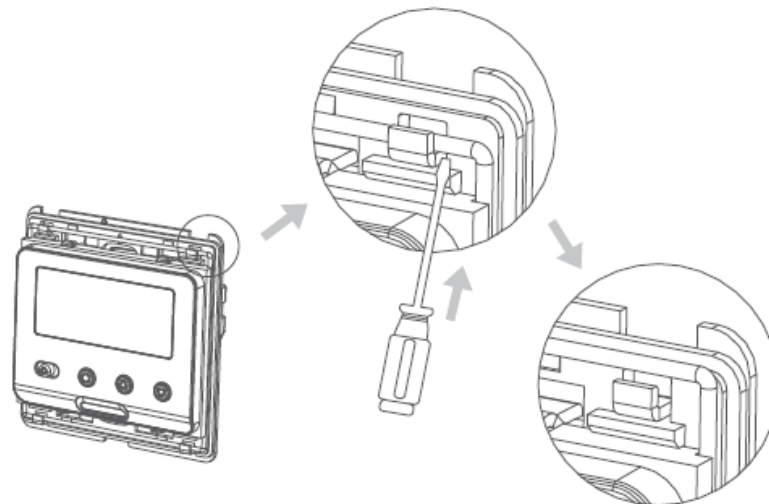
Display symbols:**Dimensions (mm):**

Mounting steps:

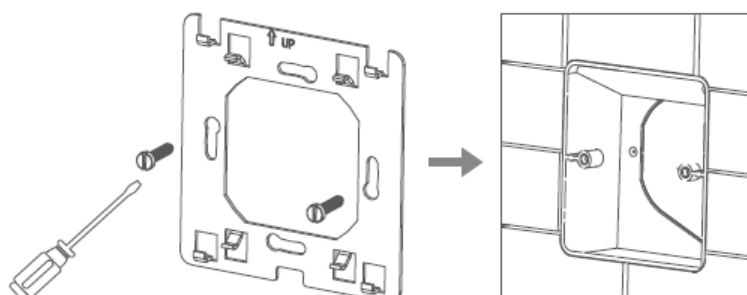
1. Release the front cover by screwdriver into bottom crack.



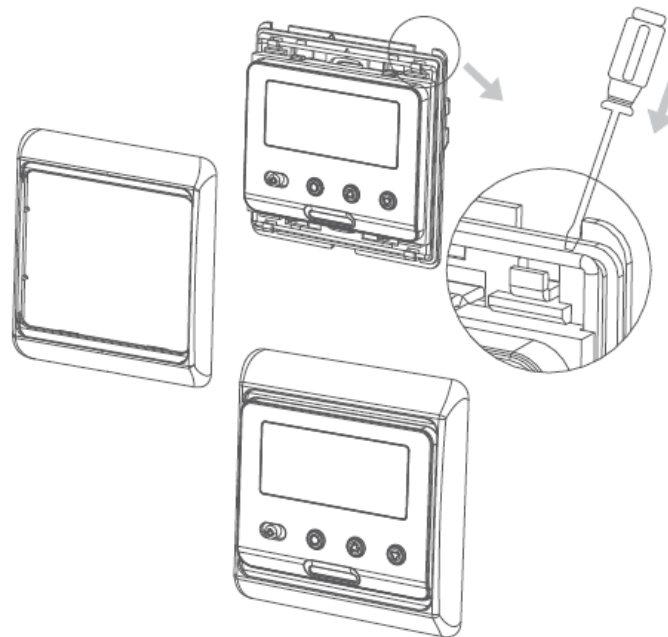
2. Take the back plate apart according to the below diagram.



3. Mount the back plate in the wall socket by screwdriver. The thermostat is installed in standard wall boxes with 60mm between the screws.



4. After connecting the wires, mount the controller on the back and remount the cover and frame.



Setting the time and day of the week

Press \odot and \ominus keys at the same time for 5 seconds, press menu key to change the clock and day of week, then press \odot and \ominus key to increase and decrease.

Connecting Diagram:

