

One to one wireless receiver with individual and adjustable limit temperature control circuit, which is applied to control the electric heating devices or on/off valve actuator used in hydronic floor heating.

Selection Table

| Model | Current | Output type |
|--------------|---------|---|
| 9006-16 | 3A | One receiver, built-in & floor sensor |
| 9006-16 (23) | 3A | One receiver, built-in & floor sensor, with potential free output |
| 9006-16 (16) | 16A | One receiver, built-in & floor sensor |

Parameters

Voltage: 220/230 V

Power consumption: 2W

Wireless frequency: 433MHz

Effective transmission distance: 200m in empty space

External limitation value: 30, 40, 55°C adjustable

Factory setting: 30°C

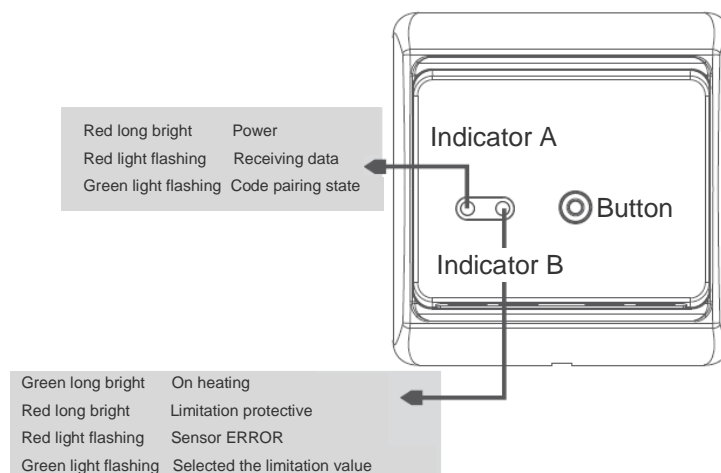
Limitation switch differential: -2°C

Ambient temperature: -5~50°C

Protective housing: IP20

Housing material: Anti-flammable PC

Description of work state



The indicator A is red when in power on.

The indicator A is red and flashing when receiving the wireless data.

The indicator A is green and flashing then entering the code pairing.

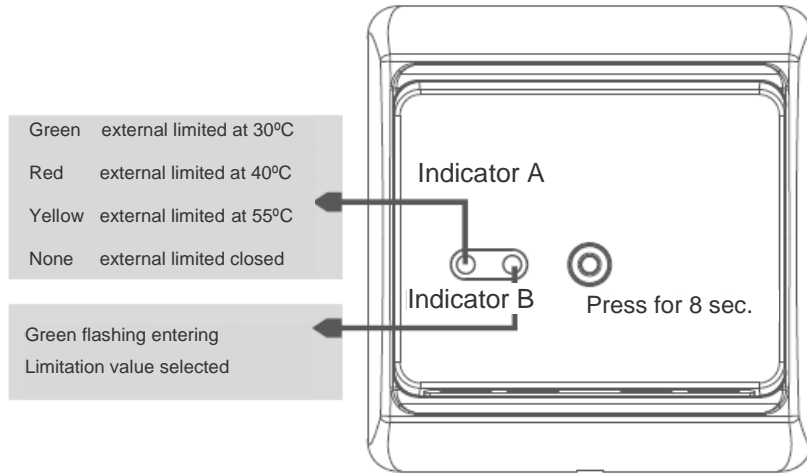
The indicator B is green when on heating.

The indicator B is red when set the external limitation protective.

The indicator B red flashing shows the sensor ERROR.

The indicator B green flashing shows entering the external limitation value select.

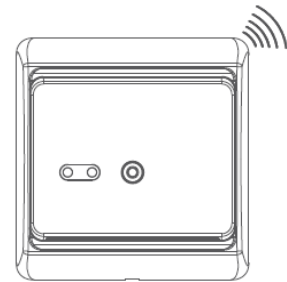
Limitation value selected



Press the button for 8 seconds till the indicator B green light flashing when in power on, that means entering the external limitation selected, Indicator A green shows external limited at 30°C, Indicator A red shows external limited at 40°C, Indicator A yellow shows external limited in 55°C, Indicator A without light shows the external limitation closed. Press the button softly and cycle selected in these four states. It will save the current setting automatically without pressing for 8 seconds and quit the limitation value set.

Code pairing method

Press the button for 5 seconds then release, indicator A green and flashing, entering the code pairing state. Code pairing successfully then quit immediately to the work mode. It will quit the code pairing state without no operate in 30 seconds.

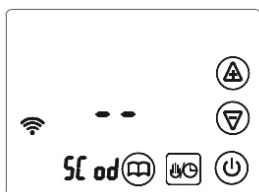


Press the menu key and the ON icon to enter the advanced setting when in power off, press the menu key again till enter the fifth item code pairing, press + and - key to start code pairing. Modify the transmission power in the sixth item, the larger the number, the higher the transmission power.



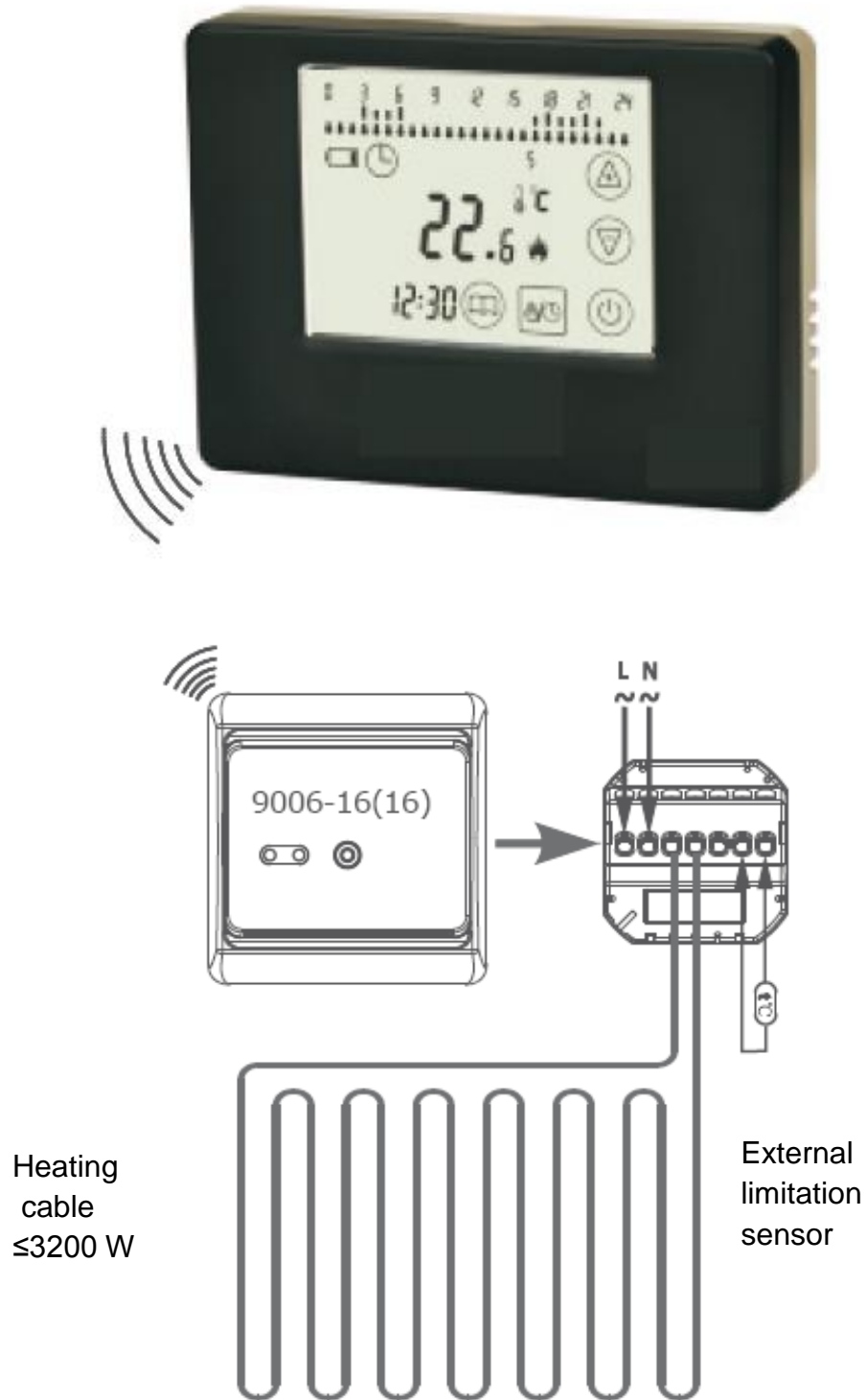
5 COD Start to code pairing
Press + or - key to start to code pairing with the receiver.

LCD display symbol  flashes 3 times.



6 PA Select the wireless transmission power.
Press + or -key to modify the power.
Set range: 0-3, 0 is Min,3 is Max.
Press off key to quit the advanced setting.

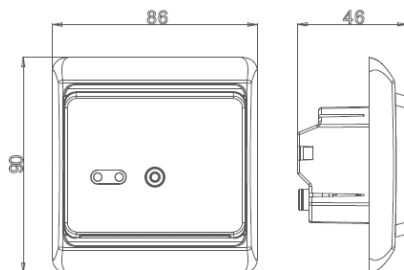
Application I:
Apply to wireless control for heating cable



**Application II:
Apply to boiler wireless control**

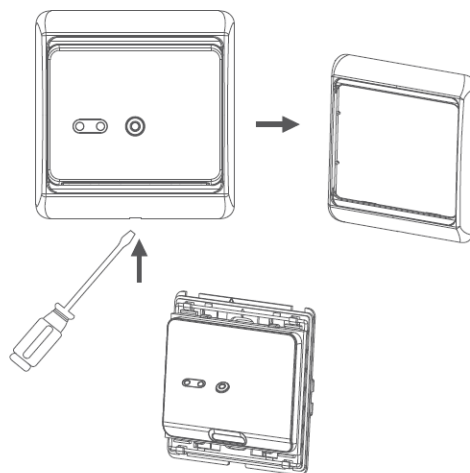


Dimensions (mm)

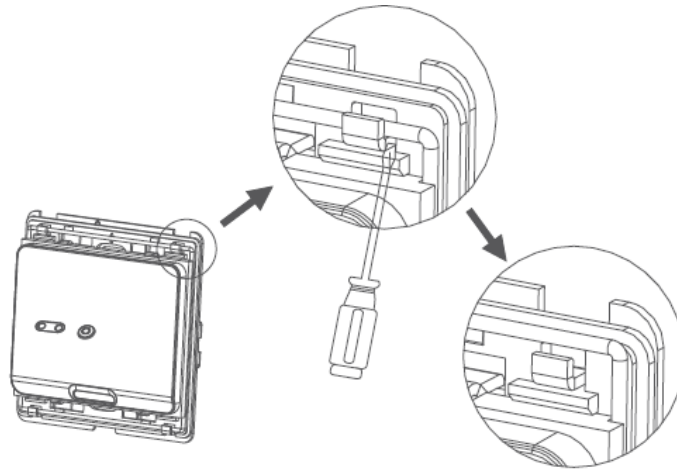


Mounting Steps:

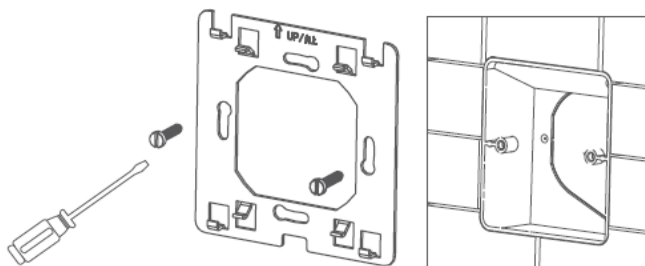
1. Release the front cover by inserting a screwdriver into bottom crack.



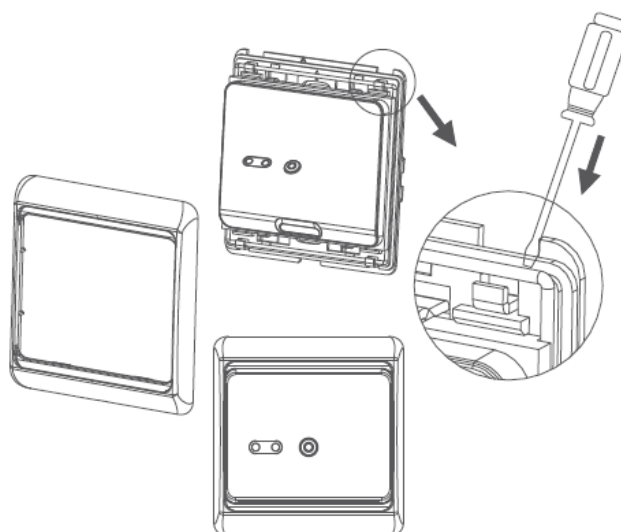
2. Take the backing plate apart according to the following diagram.



3. Mount the backing plate in the wall socket by screwdriver. The thermostat is installed in standard wall boxes with 60mm between the screws.



4. After connecting wires (see connecting diagram), mount the thermostat on the backing plate and remount the cover and frame.

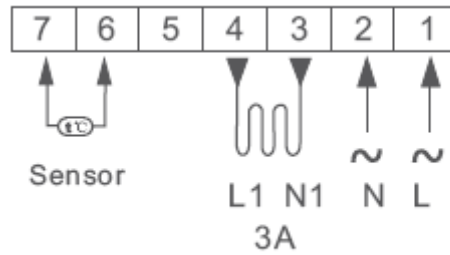


Connecting Diagram

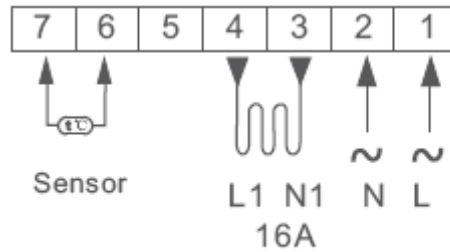
Attention:

The thermostat which connect the electric heating device is apply to full load (3.200W) heating cable in 2.500 m height above sea level, and the rated power of external load should be less than or equal to 80% rated power thermostat when in the 2.500 m to 4.200 m height.

9006-16



9006-16(16)



9006-16(23)

